



NORDIC
INVESTMENT
BANK

FINANCING
THE
FUTURE



Risk Management Policy

Adopted by the Board of Directors of the Nordic Investment Bank
on 10 June 2021 with entry into force as of 15 June 2021



NORDIC
INVESTMENT
BANK

FINANCING
THE
FUTURE

Adopted by	Board of Directors
Entry into force	15 June 2021
Version and adoption date	Version 9 adopted on 10 June 2021
Document ownership	Risk Management Office
Implementation responsibility	Risk Management Office
Control responsibility	Risk Management Office
Review cycle	At least annually
Replaced document	Risk Management Policies of 19 November 2020

Table of Contents

1 SCOPE AND OBJECTIVE	5
1.1 Risk management framework	5
1.2 Policy structure	5
2 KEY RISK MANAGEMENT PRINCIPLES	7
2.1 Mission and strategy	7
2.1.1 Introduction	7
2.1.2 Mission fulfilment	7
2.1.3 Sustainability and climate risk	7
2.2 Risk-bearing capacity	8
2.3 Risk appetite	8
2.4 Risk limits	9
2.5 Capital structure and management	9
2.5.1 Capital and liquidity adequacy	9
2.5.2 Stress testing	10
2.6 Model risk management	10
2.7 Risk governance	11
2.7.1 Risk culture	11
2.7.2 Three-lines-of-defence model	11
2.7.3 Roles and responsibilities	11
3 MAIN RISK CATEGORIES	14
3.1 General	14
3.2 Credit risk	14
3.2.1 Definition	14
3.2.2 Appetite for credit risk	14
3.2.3 Key responsibilities	15
3.2.4 Credit risk management	15
3.3 Market risk	21
3.3.1 Definition	21
3.3.2 Appetite for market risk	21
3.3.3 Key responsibilities	21
3.3.4 Market risk management	21
3.4 Liquidity risk	24
3.4.1 Definition	24



3.4.2 Appetite for liquidity risk	24
3.4.3 Key responsibilities	24
3.4.4 Liquidity risk management.....	24
3.5 Operational risk	26
3.5.1 Definition.....	26
3.5.2 Appetite for operational risk.....	26
3.5.3 Key responsibilities	26
3.5.4 Operational risk management	26
3.6 Compliance risk.....	28
3.6.1 Definition.....	28
3.6.2 Appetite for compliance risk	28
3.6.3 Key responsibilities	28
3.6.4 Compliance risk management.....	28



Definitions

Counterparty	Entity with whom the Bank enters into business transactions Refers to a single entity or group of entities which are legally and/or financially consolidated or otherwise interdependent from a risk perspective
Credit exposure	Sum of Lending exposure and Treasury exposure
ICAAP	Internal Capital Adequacy Assessment Process
Lending exposure	Sum of loans outstanding (without deduction of collateral held) and agreed, not disbursed loans
MCC	Mandate, Credit and Compliance Committee
Mid-Cap	Mid-Cap corporate with an annual turnover of EUR 150-500 million
Risk-owner	Entity ultimately responsible for the Bank's claim. May be different from the counterparty if the risk is transferred through a guarantee
RAS	Risk Appetite Statement
SMC	Small Mid-Cap corporate which is not a SME and has an annual turnover of less than EUR 150 million
SME	Small and Medium-sized Enterprise with less than 250 employees and an annual turnover of less than EUR 50 million or a balance sheet less than EUR 43 million
Treasury exposure	Defined on an instrument basis as follows: For capital market instruments exposure equals nominal value of the instrument; For reverse repurchase agreements, exposure equals fixed percentage of the nominal value of the transaction; For derivatives with Credit Support Annex (CSA), exposure equals market value, net of collateral held; For derivatives without CSA, exposure equals market value with add-on for potential future value fluctuations.

RISK MANAGEMENT POLICY

1 SCOPE AND OBJECTIVE

1.1 Risk management framework

The Nordic Investment Bank's ("NIB" or the "Bank") risk management framework is designed to manage the Bank's risk-taking in the context of its mission and strategy, and taking into account its risk-bearing capacity, willingness to take risks (risk appetite), and minimum quantitative requirements for capital, leverage and liquidity.

The willingness to take risks is described in the Bank's [Risk Appetite Statement](#) ("RAS") with the purpose of aligning the Bank's risk-taking with the statutory requirements, strategic business objectives and capital planning. The RAS provides a clear articulation of the high level principles for the Bank's risk-taking, risk mitigation and risk avoidance. The RAS is reflected in this Risk Management Policy ("Policy") which sets out the overall principles for the management of NIB's key risks, covering credit risk, market risk, liquidity risk, operational risk, model risk, climate risk, and compliance risk.

In addition to this Policy, the risk management framework consists of several more detailed risk category specific policies, guidelines, procedures and internal controls. The framework is supported by an effective risk measurement and limit system as well as risk data and systems. An adequate risk governance structure and competent staff are other key elements of the Bank's risk management framework.

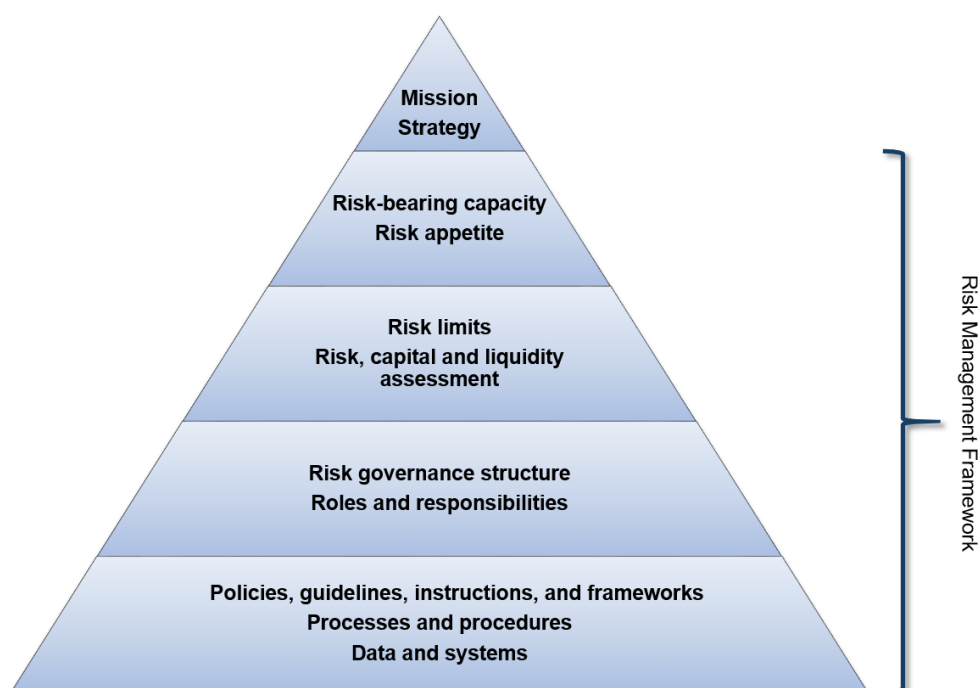


Figure 1. Hierarchical structure of the elements of Risk Management Framework.

1.2 Policy structure

This Policy is divided into four main sections; scope and objective (Section 1), key risk management principles (Section 2), main risk categories (Section 3), and risk limits (Appendices).

Section 2 describes the main aspects of the Bank's mission and mandate framework, risk-bearing capacity, risk appetite and risk limits (see Sections 2.1 - 2.4). It then continues to provide an overview of the capital and liquidity adequacy assessments and stress testing (Section 2.5) and model risk

management (Section 2.6). The governance structure is described from the risk management perspective and with focus on key risks (Section 2.7).

Section 3 describes the risk management principles for key risks. Each key risk section is structured as follows: (1) Definition of the risk; (2) Appetite for risk taking; (3) Risk management roles and responsibilities (risk governance); (4) Risk management principles including risk mitigation.

The maximum exposure limits for key financial risks (credit, market and liquidity risk) are set in the appendices.

This document is made public on the Bank's website www.nib.int. The appendices containing, among others, maximum exposure limits are for internal use only.

2 KEY RISK MANAGEMENT PRINCIPLES

2.1 Mission and strategy

2.1.1 Introduction

NIB is the international financial institution (“IFI”) of the Nordic and Baltic countries. The Bank’s mission is to promote sustainable growth of its member countries by providing financing to projects that promote productivity growth and environmental benefits.

NIB adds value by providing long-term financing in the form of loans and guarantees as a complement to other sources of financing. It may also take equity participations. The Bank’s competitive advantage is its ability to obtain funding at a favourable cost in the international capital markets, which enables longer-term lending on competitive terms to its clients. NIB’s funding advantage builds on its strong shareholder base and sound financial profile, which has enabled the Bank to maintain the highest possible credit rating (AAA/Aaa) from international rating agencies and investor confidence in the Bank as a debt issuer.

2.1.2 Mission fulfilment

The [Statutes](#) provide that the purpose of the Bank is to make financing available in accordance with sound banking principles and taking into account socio-economic considerations.

Mission fulfilment is a key consideration when determining the Bank’s willingness to take risk. For the purpose of assessing its mission fulfilment, the Bank has translated the mission into operational guidelines and principles and established a methodology for mandate rating. Each project considered for financing from NIB undergoes a mandate rating whereby the expected contribution to promoting productivity growth and environmental benefits is assessed. The assessment covers both the potential impact of the project and the implementation risk, i.e. the probability that the impact will not materialise. The mandate rating methodology and process is described in the [Mandate Rating Framework](#).

As a rule, a sufficient mandate rating is a prerequisite for financing from the Bank. In its annual business plan, the Bank sets a target level for new loans achieving mandate ratings of ‘good’ and ‘excellent’¹.

For assessing how well NIB’s lending projects have been implemented by borrowers and NIB’s mandate criteria have been fulfilled, the Bank has established a Monitoring and Ex-Post Mandate Assessment Framework.

2.1.3 Sustainability and climate risk

Given NIB’s mission, sustainability has high priority in the Bank’s operations. The Bank believes that economic growth and sustainability can go hand in hand and that taking environmental and social aspects into account is consistent with sound business practice and enhances both the Bank’s and the client’s competitive advantage.

The Bank has implemented a [Sustainability Policy](#) with the objective to improve the predictability, transparency and accountability of its actions. The Sustainability Policy sets out the Bank’s approach to sustainable development and provides guidelines for how the Bank seeks to ensure that the projects financed are sustainable from environmental, social and governance (ESG) perspectives and in compliance with applicable regulatory requirements and international good practices. Further, Treasury has implemented the Responsible Investment Framework (available at www.nib.int) setting out the principles for integrating environmental, social and governance aspects into the Bank’s treasury operations.

The Bank recognises that adverse environmental and social impacts cannot be avoided in all projects but must be appropriately reduced, mitigated or compensated for. Activities that the Bank considers

¹ The mandate rating scale is **Excellent/Good/Moderate/Marginal/Neutral** and **Negative**.

unacceptable from a sustainability perspective and, thus, not eligible for NIB financing are defined in the [Exclusion List](#).

NIB has defined its stance on climate risk management in the Risk Appetite Statement (see Section 2.3 below). Climate risk - covering both physical and transition risks - is part of the Bank's overall risk management framework and managed using similar risk management principles as described in this Policy. Both first line business functions (Lending and Treasury) as well as the second line monitoring function (Risk & Compliance department) have their roles in climate risk management in the three-lines-of-defence model applied by NIB (see Section 2.7.2.)

NIB is committed to transparency and open dialogue with its stakeholders on sustainability issues in terms of both risks and opportunities. Information on projects with potential significant adverse social or environmental impacts is made public for comments (www.nib.int) in accordance with the [Public Information Policy](#).

2.2 Risk-bearing capacity

The Bank's ability to take risks is dependent on its risk-bearing capacity. A key factor determining the risk-bearing capacity is stable earnings allowing the build-up of a strong capital base to absorb potential losses. The [Risk Appetite Statement](#) acknowledges the statutory requirement that the Bank shall aim for a profit allowing for a reasonable return on the subscribed capital.

The Dividend Policy sets as a target a dividend pay-out ratio of the annual net profit over the long-term. The annual dividend distribution is approved by the Board of Governors.

NIB's capital consists of capital subscribed by the member countries and reserves accumulated through internal profit generation.

Equity comprises the paid-in portion of the capital subscribed by the member countries and the accumulated general and specific reserves;

- The *General Credit Risk Fund* is established to cover unidentified, exceptional credit losses.
- The *Statutory Reserve* is a general reserve, which according to the Statutes must equal 10% of the subscribed capital before dividends can be paid.

Callable capital is capital subscribed by the member countries but not paid in. Callable capital is made available by the member countries at the request of the Board of Directors if deemed necessary for the fulfilment of the Bank's debt obligations. To date no capital calls have been made.

For capital adequacy assessment purposes NIB uses the concept of **adjusted common equity** to measure its loss-absorbing capacity. The concept builds on banking regulations and is derived by deducting certain items from the accounting equity that are not immediately available to cover risks.

2.3 Risk appetite

The foundation for the Bank's financial risk-taking is set in the Constituent Documents. The [Statutes](#) require that financing is made available in accordance with sound banking principles, that adequate security be obtained, unless sufficient security is considered to exist under the circumstances, and that the Bank protects itself against the risk of exchange rate losses to the extent practicable.

NIB has established its [Risk Appetite Statement](#) with the goal to align its risk-taking with the statutory requirements, strategic business objectives and capital planning. The RAS provides in written format statements that guide the Bank's risk taking and mitigation on more permanent basis, framing the overall boundaries for risk tolerance and highlighting the need for high risk awareness. The fundamentals of the RAS do not change annually but the RAS is still reviewed annually by Risk & Compliance department to ensure that the RAS remains fit-for-purpose and is relevant due to variation in the short-term business circumstances. The RAS is approved by the Board of Directors and

implemented through this Policy and other internal policies and procedures, monitoring metrics, limit system and internal controls.

Given NIB's mission, risk-taking is primarily in its core activity of lending. The Bank strives to be responsive to the financing needs of its customers and the policy objectives of its member countries, thereby maintaining its relevance for key stakeholders. In line with the Bank's risk appetite, it provides long-term financing to its customers through the cycles, and aims to continue financing economically viable investment projects also during economic downturns. The Bank aims to maintain a high quality of the loan portfolio.

The Bank's risk appetite in its treasury operations is driven by the objective of enabling and supporting lending operations, and maintaining a strong liquidity and funding position. Although performance objectives are set for the treasury operations, the Bank applies a conservative risk versus return approach in these activities. This is reflected i.a. in stricter creditworthiness eligibility criteria for treasury counterparties as compared to lending counterparties.

2.4 Risk limits

The Bank's risk-taking is operationalised in strategies and business plans as well as day-to-day business activities and decisions. The risk limit framework provides a mechanism to limit the risk-taking to an acceptable level.

NIB has implemented a four-layer risk limit framework where minimum requirements for the amount of economic capital, leverage and liquidity have been set in the Statutes. The [Principles for Capital and Liquidity Management](#) ("**Principles**") - approved by the Board of Governors - provide further details and calculation principles for the minimum requirements. The third layer cascades down the minimum requirements in the Statutes and Principles, and provides limits for those risk categories which are deemed material by the Board of Directors.² Business units may implement further set of risk limits, subject to the approval of the President.

This Policy provides limits for key financial risks (credit, market and liquidity risk) under the umbrella of the Statutes and Principles (and RAS). It also provides minimum requirements for the statutory metrics; capital ratio, leverage ratio and survival horizon (see Appendix A.3).

The limits are changed from time to time depending on the available financial resources and changes in the risk appetite. The risk limits in this Policy are approved by the Board of Directors. Limit monitoring is conducted on regular basis and breaches are reported to the Board of Directors.

The risk category specific limits, risk governance structure and reporting is described in more detail in Section 3.

2.5 Capital structure and management

2.5.1 Capital and liquidity adequacy

The Bank manages capital in accordance with statutory requirements, annual financial and business plans approved by the Board of Directors, its risk position and macroeconomic circumstances. As an IFI, the Bank is not subject to national or international banking supervision and prudential regulations and, thus, is not required to comply with capital or liquidity adequacy requirements as stipulated in the regulations. However, the Bank considers observance of prevailing capital and liquidity adequacy standards as vital for maintaining the confidence of external stakeholders such as investors and rating agencies.

The Bank aims to maintain a strong capital and liquidity position in order to support the highest possible credit rating by the rating agencies and to compare well with its peers.

² The Board of Directors has approved limits for market risks, for example.

The Bank's internal capital adequacy assessment process ("ICAAP") aims to ensure that the Bank holds a sufficient amount of capital and liquidity to withstand its current and potential future risks, including adverse macroeconomic conditions. The framework provides a holistic view on the level of risks, the robustness of risk controls and the amount and quality of capital and liquidity needed to support the strategic objectives of the Bank.

The Bank's ICAAP covers all material risks identified in the risk identification process. Quantitative risk metrics support the risk identification and assessment process.

The Bank monitors its capital and liquidity adequacy on an on-going basis and reports the position to the Board of Directors regularly. In addition, at least annually the Bank conducts a more thorough internal assessment of its capital and liquidity adequacy in line with its ICAAP methodology and provides the outcomes of the assessment to the Board of Directors.

The capital requirement is assessed on a risk-by-risk basis. The assessment and conclusions build on both the use of the Bank's internal models and other available information. The scope and risk coverage of the assessment is reviewed regularly. Capital is reserved for all material risks. The resulting capital requirement is complemented by capital buffers. Capital buffers include macroprudential buffers and additional management buffers (typically in the form of a stress test buffer). The Bank's overall capital requirement is determined by aggregating the risk area specific capital requirements and the capital buffers. The overall capital requirement is measured against the Bank's available financial resources (adjusted common equity) to determine the Bank's capital adequacy.

The assessment of liquidity risk builds on various internal and regulatory metrics complemented by qualitative analysis. The main quantitative metric used in the liquidity risk assessment is the survival horizon, which measures how long the Bank would be able to fulfil its payment obligations in a severe stress scenario. The resulting liquidity requirement is measured against available liquid assets (liquidity buffer) to determine the Bank's liquidity adequacy.

The ICAAP methodology describes the framework, assessment elements and the internal process in more detail.

2.5.2 Stress testing

Stress testing is a forward-looking risk management tool supporting the Bank's risk identification, monitoring and reporting procedures, capital and liquidity adequacy assessments as well as capital and liquidity planning. Stress testing, including sensitivity analysis and reverse stress testing, are used for assessing the resilience of the Bank under different economic assumptions or scenarios.

The Bank conducts both solvency stress tests and liquidity stress tests to ensure that it is sufficiently capitalised and holds adequate liquidity buffers to carry out its mission even in severe but plausible macroeconomic scenarios. The design of the stress test methodology and the specification and severity of test scenarios reflect the Bank's business model, risk profile as well as current and assumed future macroeconomic circumstances.

The stress testing outcomes are utilised in the Bank's capital and liquidity adequacy assessments, capital planning and risk management. Stress tests for ICAAP purposes are conducted in line with the ICAAP schedules.

The Stress Testing Guidelines provide methodological and practical details for the Bank's stress testing.

2.6 Model risk management

Model risk is defined as the potential for adverse consequences from decisions based on an inappropriate, incorrect, misspecified or misused model. Model risk can lead to financial loss, poor business and strategic decision-making, and/or reputational damage. Model risk can materialise in risk measurement models, in valuation models or in other models that support decision-making. There are

also interactions and interdependencies between the models in use, highlighting the need for proper model risk management.

Model risk is managed by careful and adequate model design, development, implementation, documentation and validation practices. As a rule, there shall be adequate separation of duties between those functions/units that develop models and the validation function. Independent model validation function is a cornerstone of model risk management framework and its roles and responsibilities shall be clearly defined.

Model risk management is an important part of the Bank's overall risk management framework. Under the umbrella of this Policy, NIB has issued a separate Model Risk Management Policy and the related Guideline that provide detailed principles and governance for model risk management at NIB.

2.7 Risk governance

2.7.1 Risk culture

Risk culture is one of the core elements in the RAS. The Bank is committed to promote a culture of integrity, high ethical standards and strong risk awareness. All individuals in the Bank are expected to contribute to and promote a sound risk culture which helps to maintain a sound internal control environment and improves the operation of the Bank's risk management framework. Clear governance structure, policies and procedures support the creation of a sound risk culture.

2.7.2 Three-lines-of-defence model

NIB follows the three-lines-of-defence model where the first line of defence consists of risk-taking business functions. The business functions are responsible for day-to-day risk management within their business units and are required to comply with the relevant internal policies, regulations and procedures. The second line (Risk & Compliance department) and the third line (Internal Audit) provide oversight, monitoring and audit activities and conduct independent evaluations and reporting to the senior management on the adequacy of the Bank's internal control environment.

An overview of the Bank's risk governance structure is provided in Appendix A. Descriptions of the roles and responsibilities of key decision-making bodies, committees and other functions are provided below.

2.7.3 Roles and responsibilities

The **Board of Governors** is the Bank's supreme decision-making body. The Board of Governors is responsible for, among other things, matters concerning NIB's Statutes and subscribed capital. The Board of Governors approves the annual report of the Board of Directors and the audited financial statements of the Bank. The Board of Governors is composed of eight governors. The Minister designated by it as its Governor represents each member country. For further information, please see the [Rules of Procedure of the Board of Governors](#).

The **Control Committee and its Chairmanship** is the Bank's supervisory body. It monitors that the operations of the Bank are conducted in accordance with the Statutes and sound banking principles. The Chairmanship administer the responsibilities and tasks of the full Committee, monitor the Bank's financial position, risk levels, capital and liquidity position and oversee the performance of the audit of the Bank's financial statements, carried out by the external auditors. The full Committee focuses on monitoring fulfilment of NIB's purpose and in particular its mandate and mission. For further information, please see the [Rules of Procedure for the Control Committee](#).

All the powers that are not exclusively vested in the Board of Governors are entrusted to the **Board of Directors**. The Board of Directors has the overall responsibility of the Bank's risk management and oversees the implementation of the Bank's risk management framework by approving risk management policies, including maximum limits for exposure to the main types of risk, as well as by approving the capital and liquidity adequacy assessment process and its outcomes. The Board of Directors approves projects to be financed by the Bank and adopts policy decisions concerning the operations of the Bank,

in particular the general framework for financing, borrowing and treasury operations and their management. For further information, please see the [Rules of Procedure for the Board of Directors](#).

The **President** is responsible for implementing the Bank's risk management framework set by the Board of Directors, for management of the Bank's risk exposures, and for ensuring that the Bank's aggregate risk is consistent with its financial resources and willingness to take risk. The Board of Directors has delegated some credit approval authority to the President for execution in the Mandate, Credit and Compliance Committee.

The following committees assist and advise the President:

- The **Executive Committee** consists of the President and Heads of Department as ordinary members. In addition, the Executive Committee has three associate members. The President appoints the ordinary and associate members. The Board of Directors confirms the appointment of the ordinary members. The committee is the forum for addressing policy and management issues, including following up the financial results, business plan and strategy of the Bank. The committee meets approximately twice a month. For further information, please see the Rules of Procedure for the Executive Committee.
- The **Asset and Liability Committee (ALCO)** consists of the members of the Executive Committee, including the Chief Risk Officer, and other senior staff members as appointed by the President. The ALCO is responsible for monitoring and steering NIB's balance sheet and capital adequacy development, and NIB's risks on an aggregate level. The ALCO duties include monitoring the Bank's balance sheet development and capital adequacy, setting targets and limits for risks to be managed at the bank level, monitoring liquidity adequacy and funding structure, as well as monitoring performance against the agreed risk appetite. The committee meets approximately six times a year. For further information, please see the Rules of Procedure for the Asset and Liability Committee.
- The **Mandate, Credit and Compliance Committee (MCC)** consists of the President and the Head of Lending, the Chief Financial Officer, the Chief Risk Officer, the General Counsel and the Chief Operating Officer. The committee is responsible for preparing and making decisions on credit matters related to lending operations and for approving treasury counterparties. The President exercises his executive powers regarding lending operations through the MCC. Further, the committee reviews all credit proposals submitted to the Board of Directors for approval. The committee usually meets weekly. For further information, please see the Rules of Procedure for the Mandate, Credit and Compliance Committee.
- The **Treasury Committee** consists of the President, the Chief Financial Officer and a designated risk officer. The committee is responsible for preparing and making decisions on matters related to treasury operations, more specifically with respect to NIB's capital markets (funding) and derivatives activities, asset and liability management, and portfolio management. The committee makes recommendations, and where appropriate, decisions in the area of market, counterparty and liquidity risk exposure. It also monitors the Bank's borrowing activities and has oversight of treasury risk reporting to the Board of Directors. The committee usually meets monthly. For further information, please see the Rules of Procedure for the Treasury Committee.
- The **Business and Technology Committee (BTC)** consists of the Head of IT and other senior staff members appointed by the President. The BTC prioritises, directs, monitors and governs NIB's enterprise architecture, change requests and projects to achieve NIB's strategic goals. For further information, please see the Rules of Procedure for the Business and Technology Committee.

In addition to the above mentioned advisory bodies to the President, the Bank has the following permanent internal committees:

- The **Business Integrity Council** The main task of the Council is to enhance awareness of integrity and corruption risks among the Bank's staff and stakeholders. The Council is chaired by the Chief Compliance Officer (CCO).
- The **Trust Fund Committee** shall ensure that the purposes of the trust funds managed by NIB are fulfilled in the most efficient way. The committee also approves the activity plan of the trust funds and proposes allocations from a trust fund. The committee gives its recommendations to the respective donor(s) for their final decision.

In the day-to-day operations, the Bank has established a segregation of duties between functions that enter into business transactions with customers or otherwise expose the Bank to risk, and functions in charge of risk assessment, risk measurement, monitoring and control;

- The business functions, **Lending** and **Treasury**, are responsible for implementing the Bank's business strategy and act as the first line of defence for the risks in their operations. Lending is responsible for loan origination and mandate fulfilment in accordance with the Bank's willingness to take risk. Treasury provides support by executing the funding strategy and managing the liquidity as well as balance sheet risks (asset and liability management). The business functions carry out the day-to-day management (identification, assessment, monitoring and internal reporting) of all risks assumed in their operations and ensure that an adequate return is achieved for the risks taken. Both the Head of Lending and the Head of Treasury & Finance report to the President.
- The **Risk & Compliance** department independently controls the risk positions of the Bank. It implements the Bank's risk management related policies, guidelines and frameworks as approved by the Board of Directors and the President. The Risk & Compliance department has the overall responsibility for identifying, measuring, assessing, monitoring and reporting on risks across risk types and organisational units. The department is responsible for the Bank's risk models, tools, policies and frameworks (like ICAAP and RAS) as well as the day-to-day monitoring of market, liquidity and operational risks. It also monitors and reports regularly on credit risk at portfolio level. The **Compliance function** belongs to the second line of defence and oversees, coordinates and reports on matters relating to compliance and integrity risks. The Chief Compliance Officer reports to the Chief Risk Officer (CRO), has a dotted reporting line to the President and shall have unrestricted access to the Chair of the Board of Directors and the Chair of the Control Committee.
- The Chief Risk Officer (CRO) heads the Risk & Compliance department and reports to the President. The CRO is a member of the Executive Committee and the Mandate, Credit and Compliance Committee (MCC), with the role and purpose to ensure that risk considerations are properly taken into account, to influence decision-making and, when necessary, challenge decisions that give rise to material risk. The CRO shall have unrestricted access to the Chair of the Board of Directors and the Chair of the Control Committee. An important objective is to engage the senior management, Board of Directors and the Control Committee on constructive dialogue on key risk issues.
- The **Legal** department supports the business functions carrying the responsibility for minimising and mitigating legal risks in all of the Bank's operational, institutional and administrative activities. The General Counsel reports to the President and is Secretary to the Board of Governors, the Board of Directors and the Control Committee.
- **Internal Audit** provides an independent evaluation of the controls, risk management and governance processes. The Head of Internal Audit reports to the Board of Directors and the Control Committee and works administratively under the auspices of the President.

3 MAIN RISK CATEGORIES

3.1 General

The main risks that the Bank has identified in its operations are credit risk, market risk, liquidity risk, operational risk and compliance risk. Risks are managed with the overall objective of maintaining financial soundness and avoiding activities that could threaten the Bank's reputation.

While NIB is not subject to banking regulations, the Bank considers European Union Directives and Regulations on the banking sector and recommendations and guidelines from the European Banking Authority as well as international regulatory standards set by the Basel Committee on Banking Supervision as the reference for its risk management framework.

The Bank's risk management framework comprises risk policies and procedures formulated for the identification, measurement, assessment, monitoring and reporting of risks, including several layers of limits set to manage the exposure to quantifiable risks. The Bank recognises that effective risk management is based on a sound risk culture, which is characterised, among others, by a high level of awareness concerning risk and risk management in the organisation. Regular training of staff in risk related matters is part of the Bank's risk management practices.

3.2 Credit risk

3.2.1 Definition

Credit risk is defined as the risk of loss resulting from the failure of the Bank's borrower or other counterparty to fulfil their contractual obligations and that collateral provided does not cover the Bank's claims.

3.2.2 Appetite for credit risk

To fulfil its mission, the Bank provides long-term loans and guarantees to customers in the member and non-member countries. Thus, most of the credit risk arises in the Bank's lending operations.

The Bank is also exposed to credit risk in its treasury activities, where credit risk derives from the financial assets that the Bank uses for investing its liquidity, and from derivative instruments that are used to manage foreign exchange and interest rate risks in the Bank's funding and lending transactions.

The Bank is subject to concentration risk due to its regional focus, where majority of the lending is targeted to member countries, and due to its focus on limited range of customers, customer sectors and segments. Yet, the overall target is to avoid excessive risk concentrations and to have an appropriate diversification at the portfolio level.

The Bank aims to maintain a high quality loan portfolio, while acknowledging that some of its lending involves greater risks. The Bank accepts limited credit risk in its Treasury operations arising from the investments in the liquidity portfolio. The appetite for counterparty credit risk arising from the use of derivatives is low.

The Board of Directors has established the following facilities **in terms of lending volume**:

- SME facility for direct financing to small and medium-sized enterprises (SMEs) and small mid-cap corporates (SMCs) in the member countries up to a total amount of EUR 250 million;
- Mid-Cap facility for direct financing to mid-cap corporates in the member countries up to EUR 500 million;
- Combined Corporate Bond Investment facility up to EUR 1 billion. Under this facility Lending can invest into labelled bonds³ issued by corporates and municipalities in the member countries.

³ From primary markets only.

Under the facility Treasury can invest into corporate bonds and commercial papers issued by corporates in member and non-member countries. The internal nominal allocation for the Lending and Treasury sub-portfolios is decided at the MCC;

- Lending Baltic Commercial Paper facility to invest in commercial papers issued by Baltic corporates up to EUR 75 million;
- Mezzanine facility up to EUR 150 million.⁴

The following facilities have been established **in terms of economic capital**:

- High Risk Lending Facility (HRL) for counterparties with a rating of PD14 or weaker, to finance projects in member and non-member countries up to EUR 300 million in terms of economic capital.

3.2.3 Key responsibilities

The Board of Directors approves the Credit Risk Policy, which sets out the key principles of the Bank's credit risk management and control. Based on regular reporting, the Board of Directors oversees the development of the Bank's credit risks, both at the counterparty and portfolio level.

The Board of Directors approves new loans and sets the limits for maximum credit risk exposure at counterparty, business sector, country and business line level. The Board of Directors has authorised the President to approve loans up to a defined amount in the Mandate, Credit and Compliance Committee (MCC) as set out in the Rules of Procedure for the Mandate, Credit and Compliance Committee. Treasury counterparties are approved by the MCC within the limits authorised by the Board of Directors. The Board of Directors receives information on credit approvals made in the MCC.

The Lending department is responsible for the loan and counterparty (borrower and/or risk-owner) appraisal process. The Risk Management functions verify compliance with relevant internal policies and guidelines and opine on proposed ratings. The appraisal process for new counterparties in treasury operations is the responsibility of the Treasury function in cooperation with the Risk Management functions. The credit risk monitoring process and related responsibilities are laid out in the Guidelines for Credit Counterparty Monitoring and Reporting.

The MCC decides on watch-listing of credits and on impairment provisioning. The handling of distressed credits is described in the Guidelines for the Special Credit Operations.

The Risk & Compliance department provides independent oversight of credit risks at the portfolio level. It monitors the level of credit risks in the Bank and reports on the level and development of credit risk and the respective capital requirement to the Board of Directors regularly.

3.2.4 Credit risk management

NIB's credit risk management aims at preserving the high credit quality of the Bank's portfolios and thereby protecting the Bank's short- and long-term viability. The Bank's credit risk management builds on the principles of (1) appropriate risk diversification within the scope of the mission; (2) thorough risk assessment at the credit appraisal stage; (3) risk-based pricing and risk mitigation; (4) continuous risk monitoring at the individual counterparty level as well as portfolio level; (5) avoidance of undesirable risks to the extent possible.

Key risk indicators monitored are, among others, the development in risk class distribution in the lending and treasury portfolios as well as large exposures to individual counterparties, sectors and countries.

3.2.4.1 Risk-sharing and outsourcing of credit risk management

Within Lending's activities, the Bank provides direct financing to small and medium-sized enterprises (SMEs) and small mid-cap corporates (SMCs) in the member countries. The Bank's direct lending to the SME/SMC segment is carried out in cooperation with a partner bank and includes outsourcing of

⁴ No new transactions are executed under this facility.

certain operations, such as the credit assessment process, as well as potential delegation of authority to the partner bank. A thorough due diligence of the partner bank's credit policies, credit analysis, credit reporting and work-out process is undertaken to ensure fulfilment with NIB's credit policies, rating frameworks and other criteria.

Financing to SMEs/SMCs may be provided on the basis of risk-sharing (in the form of a guarantee or other risk-sharing arrangement) or as direct loans originated and administered by the partner bank. In any risk-sharing arrangement, a key principle is to minimize incentives for adverse selection by the partner bank. In case of pro-rata risk sharing arrangement, NIB will generally not assume more risk than the partner bank on any SME/SMC counterparty. In case of non-pro rata risk sharing arrangements, NIB's maximum exposure on a SME/SMC borrower is determined case by case.

Lending to the SME/SMC segment is further outlined in the Credit Risk Policy and the Credit Enhancement Guidelines.

3.2.4.2 Credit exposure and concentration risk

The Bank strives to avoid excessive concentration in any single counterparty, industry sector or country outside the member countries. The maximum credit exposure that the Bank is willing to take is expressed in terms of exposure limits set by the Board of Directors (Appendix 1-9). Credit exposure is the aggregate of lending and treasury exposure. The limits are measured by total credit exposure and economic capital consumption against the Bank's equity. The limits are reviewed at least annually.

Counterparty limits

The Bank defines a single counterparty as a counterparty or group of counterparties that are legally and/or financially consolidated or otherwise interdependent from a risk perspective. For exposure limit purposes the Bank considers the entity where the risk resides, i.e. the risk-owner, as the counterparty. The risk-owner is the entity that is ultimately responsible for the Bank's claim and may be different from the obligor if the risk is transferred through a guarantee. The Bank applies risk transfers only when a payment guarantee covering the full exposure is in place (please see the Credit Enhancement Guidelines).

- **Single counterparty limits:** The maximum risk that the Bank is prepared to take on a single counterparty is defined based on the creditworthiness of the counterparty as expressed by the probability of default (PD). In addition, the exposure is limited based on the loss given default (LGD) and the expected loss (EL) of the transaction(s) entered into with the counterparty. The limits are scaled to the Bank's equity and the counterparty's equity.

Counterparty limits in the Bank's lending operations apply to non-sovereign exposures whereas in the treasury operations counterparty limits apply to both sovereign and non-sovereign exposures. Please see the Counterparty limits, Appendix 1 and 2.

- **Large exposure limits:** The aggregate of large counterparty exposures is managed within limits measured by total credit exposure and economic capital consumption and set in relation to the Bank's equity. Please see the Limits on large counterparty exposures, Appendix 4.
- **High-risk exposure limit:** The Bank strives to control risk concentrations in the weaker risk classes. As such, total lending to counterparties in rating category PD14⁵ and weaker may not exceed EUR 300 million in terms of economic capital. Please see the Limits on lending to counterparties rated PD14 and weaker, Appendix 5.

As a rule, the Bank refrains from new lending to borrowers in the risk classes PD17-20³.

⁵ Rating scale: PD1 to PD20 and D1,D2; PD1-10 correspond to investment grade ratings by S&P and Moody's

Industry sector limits

The Bank aims to maintain a reasonably granular portfolio in terms of industry sector exposure.

Limits have been set on the maximum credit exposure to a single industry sector as well as on the economic capital consumption of a sector. The limits have been set in relation to the Bank's equity. The Bank accepts higher exposure to the public sector and the financial sector, the latter in order to accommodate the exposure from the Bank's treasury operations, and the lending to financial intermediaries, please see the Business sector limits, Appendix 5.

Country limits

Country limits apply for lending in non-member countries. Limits are reviewed annually and adjusted as and when required to accommodate the development in lending activities. The Bank has not set limits for the aggregate lending exposure in its member countries. Country limits for the Bank's treasury operations have been set to include exposure in the member countries.

The key attribute for determining country limits is the country risk rating. The limits are scaled to the Bank's equity, please see the Country limits, Appendix 3 and 3a.

3.2.4.3 Credit risk assessment

The counterparty's debt servicing capacity is a key consideration for credit approval. The assessment of a counterparty's creditworthiness focuses on identifying the main financial risks and business risks related to the counterparty. Based on the assessment, a risk rating indicating the probability of default (PD) is assigned to the counterparty.

The Bank's PD rating methodologies are laid out in the rating frameworks for corporates, banks, local and regional governments, project finance and covered bonds. For sovereign counterparties the Bank uses PD ratings derived from external ratings. Please see the Country Risk - Assignment, monitoring and reporting process.

A separate expected loss (EL) rating is assigned at the transaction level. The EL rating factors in the loss given default (LGD), i.e. the loss severity in the event of a counterparty default. The LGD assignment process relies on models, which produce an LGD estimate based on the type of counterparty and the characteristics of the transaction, such as guarantees, collateral, seniority of the claim and other credit enhancing factors in the transaction. For further information, please see the Rating Framework for Loss Given Default and the Rating Framework for Covered Bonds.

The Bank's risk rating system comprises 20 classes to differentiate the risk of counterparty default (Obligor Master Scale, Appendix 11) and the expected loss on a transaction (Transaction Master Scale, Appendix 12). In addition, separate D classes apply for non-performing transactions. For reference to external ratings, the internal scales are mapped to the ratings of Standard & Poor's and Moody's.

The process of assigning PD and LGD ratings to lending counterparties is carried out by the Lending department. The process of assigning PD and LGD ratings to treasury counterparties is carried out by the Treasury function. The credit opinion provided by the Risk Management functions includes an opinion on the PD and LGD. The risk ratings are approved by the Mandate, Credit and Compliance Committee.

The Bank's credit risk assessment includes the use of quantitative risk methodologies and models as well as qualitative assessments based on expert judgement. The development of the analysis tools is made in cooperation between the relevant business functions and the Risk & Compliance department, under the oversight of senior management in steering committees. Periodic validation of the tools is carried out and/or overseen by the Risk & Compliance department. Final approval for production use of credit risk assessment tools is made by the Executive Committee.

3.2.4.4 Credit risk mitigation

Lending

The Statutes require that the Bank obtains adequate security for loans (and guarantees) granted, unless sufficient security is considered to exist under the circumstances.

As a rule, the Bank finances maximum 50% of the total costs for a single project. Financing to small and medium-sized enterprises, small mid-cap corporates and mid-cap corporates in the Bank's member countries can be extended up to 75% of the total project or financing need fulfilling NIB's mandate criteria.

The Bank lends and invests on senior unsecured or on secured basis. The level of credit enhancement required in the Bank's lending depends, among others, on the creditworthiness of the counterparty and the tenor and repayment structure of the loan. For further information, please see the Credit Risk Policy and the Credit Enhancement Guidelines.

When credit risk mitigation is provided through third party guarantees, the Bank assesses the conditions for **risk transfer**. Risk transfer refers to a substitution procedure whereby the guarantor of a transaction is considered to be the counterparty from a risk perspective (risk-owner) instead of the borrower. The types of acceptable guarantees and collateral as well as related valuation processes are set out in the Credit Enhancement Guidelines.

Units responsible for client relationships are responsible in the first place for ensuring that the Bank is protected by sufficient credit enhancement. The Risk Management functions provide an opinion on the proposed credit enhancements. The Mandate, Credit and Compliance Committee makes the final decision on the required credit enhancements.

Treasury

In its treasury operations, the Bank uses netting and collateralisation to mitigate credit risk related to derivatives and reverse repurchase agreements. The Bank undertakes swap transactions only with counterparties that meet the required minimum counterparty credit rating and have executed an International Swaps and Derivatives Association (ISDA) Master Agreement and signed a Credit Support Annex (CSA). The ISDA master agreement allows for a single net settlement of all transactions covered by the agreement in the event of a counterparty default or early termination of the transactions. Under the CSA, the derivative positions are marked to market daily, and the resulting exposures are collateralised by cash or government securities. Reverse repurchase transactions are conducted on the terms of the Global Master Repurchase Agreement (GMRA).

3.2.4.5 Credit risk monitoring and reporting

The Bank puts strong emphasis on continuous monitoring of the credit risk development in its lending and treasury operations. Credit risk is monitored both at counterparty level, for relevant sectors and at portfolio level. The primary responsibility for credit risk monitoring resides with the unit responsible for the client relationship, i.e. Lending, Treasury and Special Credits. The reference document is Guidelines for Credit Counterparty Monitoring and Reporting. Risk & Compliance department is responsible for regular reporting to the Board of Directors on the Bank's risk position in relation to established limits.

3.2.4.5.1 Counterparty level

Lending exposures

All credit exposures are subject to continuous monitoring of contractual compliance and events/signals that could potentially lead to or indicate a material change in risk. In addition, an annual follow-up (AFU) is conducted on the entire loan portfolio. The AFU includes a follow-up of the customer relationship, policy and contractual compliance as well as a credit risk review.

The annual follow-up is presented to the Mandate, Credit and Compliance Committee and reported the Board of Directors.

Large exposures, defined as the 20 largest non-sovereign exposures and the 20 largest economic capital consumers, are subject to individual and more thorough analysis. The same applies to high-risk counterparties defined as counterparties in risk classes PD14-16 ⁶ and watch-listed counterparties.

Compliance with maximum single-counterparty limits for lending transactions is verified by the Risk Management functions. Compliance with aggregate/portfolio limits in lending operations is also monitored by the Risk Management functions. Exposure in excess of maximum limits may occur e.g. due to downgrade of a counterparty rating. Limit breaches are reported to the Board of Directors.

Treasury exposures

All exposures are subject to continuous monitoring of events/signals that could potentially lead to or indicate a material change in risk. At a minimum every second year, the counterparties are analysed and the risk class validated. Counterparties with a risk class weaker than EL6 are prioritised. The follow-up is presented to the Mandate, Credit and Compliance Committee.

Compliance with maximum individual limits for new treasury counterparties is verified by the Risk Management functions. Compliance with individual counterparty and aggregate/portfolio limits in treasury operations is monitored on daily basis by the Risk Management functions. Exposure in excess of maximum limits may occur e.g. due to downgrade of a counterparty rating. Limit breaches are reported to senior management and the Treasury Committee, as well as to the Board of Directors if the maximum exposure limit is exceeded.

Watch-listed exposures

Following the identification of a seriously deteriorated debt repayment capacity and/or a serious deterioration in the financial standing, the counterparty is placed on the watch-list and becomes subject to specific watch-list monitoring. All loans, borrowers and Treasury counterparties in risk class PD17 and/or EL17 ⁵ or below shall be proposed for the watch-list. Please see the Credit Risk Policy.

3.2.4.5.2 Portfolio level

Monitoring of the credit risk development at portfolio level is carried out regularly by Risk & Compliance department, which is responsible for analysing and reporting the development to the Executive Committee, the Treasury Committee, the ALCO and the Board of Directors. The reporting includes, among others, an analysis of the aggregate credit risk exposure, credit risk concentrations, changes in the risk profile, exposure against portfolio risk limits and development of economic capital.

3.2.4.6 Risk-based pricing

The Statutes stipulate that the Bank shall operate according to sound banking principles and aim for a profit allowing the formation of reserves and reasonable return on capital. Loans and guarantees are priced to cover the Bank's cost of funds, administration costs, the cost of the risk involved in the transaction and the cost of capital employed. For loan pricing purposes the Bank uses a pricing tool that enables calculation of the minimum earnings required on a loan in order to cover all lending related costs and an appropriate return for the level of risk assumed. Internal credit risk ratings and associated risk parameters, as well as the structure of the transaction are key input factors into the pricing tool.

⁶ Rating scale: PD1 to PD20 and D1,D2; PD1-10 correspond to investment grade ratings by S&P and Moody's

3.2.4.7 Expected credit losses & impairment of financial assets

The Bank makes timely recognition of, and provision for, expected credit losses (“ECL”) and the impairment of financial assets and commitments in accordance with the International Financial Reporting Standard (IFRS 9). The estimation of ECL takes into account a broad range of information, including forward-looking macroeconomic factors. The main principles applied for calculating and reporting provisions based on ECL are set out in the Expected Credit Loss Framework. ECL are measured by allocating financial assets under scope into three categories (stages) at each reporting date:

- Stage 1: Financial assets which are performing and for which no significant increase in credit risk has been identified since initial recognition;
- Stage 2: Financial assets which are performing but for which a significant increase in credit risk has been identified since initial recognition;
- Stage 3: Non-performing financial assets, as defined in the Non-Performing Exposures Framework.

The MCC approves loss provisions from the ECL estimate – based on Macro-Financial scenarios which feed into ECL model calculations and additional management overlay adjustments, if any – and individual impairments. Risk & Compliance is responsible for generating the Macro-Financial scenarios and the maintenance and development of the ECL model.

3.3 Market risk

3.3.1 Definition

The Bank defines market risk as the risk of valuation loss or reduction in expected earnings stemming from adverse fluctuations in exchange rates, interest rates, credit spreads or cross-currency basis spreads.

3.3.2 Appetite for market risk

The Bank's strategy is to obtain cost-efficient funding from diversified sources and provide lending that is tailored to the needs of its customers. This gives rise to foreign exchange risk and structural interest rate risk due to mismatches in the Bank's assets and liabilities in terms of currency composition, maturity profile and interest rate characteristics. Cross-currency basis risk stems from the hedging techniques used by the Bank to mitigate the above risks. This risk is inherent in transactions exchanging foreign currencies at a future point in time and is mainly driven by liquidity supply and demand in those currencies.

The Bank's securities portfolio held for liquidity purposes is exposed to interest rate risk and credit spread risk. Credit spread risk refers to a potential decline in market value due to perceived change in the credit quality of the issuers of the securities held in the portfolio.

The Bank maintains a small-size trading portfolio allocated to active position management for the purpose of achieving additional earnings and for monitoring market signals in the international capital markets.

The Bank accepts moderate interest rate and credit spread risk arising from the investments in the liquidity portfolio. Interest rate risks arising from funding and lending activities are hedged with the objective of protecting earnings and the economic value of assets and liabilities. Exposure to currency risk is kept low and effectively mitigated by using derivatives to protect the Bank against realised foreign exchange rate losses. The Bank allows exposure to currency basis risk arising from the use of derivatives for hedging purposes. The Bank's appetite for volatility risk is low.

3.3.3 Key responsibilities

The Board of Directors annually reviews and approves maximum limits for exposure to market risks. The Board of Directors receives reports on the Bank's market risk positions at its regular meetings.

The Treasury Committee oversees the activities that give rise to market risk exposure and establishes operating guidelines including various levels of operational limits within the maximum limits set by the Board of Directors.

The ALCO oversees market risk exposures as part of the Bank's overall risk picture.

The Bank's day-to-day market risks are managed by Treasury.

The Risk Management functions provide independent oversight of all significant market risks, supporting the Treasury Committee, the ALCO and Treasury with risk measurement, analysis, daily monitoring and reporting.

3.3.4 Market risk management

The Bank manages market risks by hedging against foreign exchange risk and interest rate risk with the objective to protect its earnings and the economic value of its assets and liabilities. Foreign exchange risk is practically fully hedged. Interest rate risk deriving from mismatches between funding and lending is kept at a modest level. The Bank's appetite for interest rate risk and credit spread risk pertains to the earnings expectations set for the liquidity portfolio.

As part of its structured funding transactions, the Bank may use financial instruments linked to other market risk factors than the above. A prerequisite is that such transactions are completely hedged with derivatives and that the Bank is able to value and measure the risks involved in the derivatives. The instruments that the Bank is authorised to use are laid out in Authorised Instruments in Treasury Operations, Appendix 10.

According to the Statutes, the Bank may when specific need arises, acquire shares or other assets, in support of its business or to protect its claims.

3.3.4.1 Foreign exchange risk

The Statutes require that the Bank shall, to the extent practicable, protect itself against the risk of exchange rate losses. The Bank's operating principle is to hedge foreign exchange risk by the use of derivatives to convert its multi-currency borrowings into the primary lending currencies. Investments in assets held for liquidity purposes are made in the primary lending currencies. Generally, the Bank does not hedge its future net interest margin against movements in foreign exchange rates.

In compliance with the statutory requirement and the set risk appetite, limits for acceptable foreign exchange risk are kept low compared to the Bank's equity. Limits have been set to restrict the overnight open positions, i.e. the net nominal value of assets and liabilities in each foreign currency. Please see the Limits for Exchange Rate Risk, Appendix 8.

3.3.4.2 Cross-currency basis risk

Cross-currency basis risk is embedded in the currency swaps that the Bank uses to hedge foreign exchange rate risk in future cash flows from its lending and borrowing and for liquidity management purposes. Changes in the currency basis spreads affect the mark-to-market valuations of the swaps, which in turn gives rise to volatility in the Bank's comprehensive income. Cross-currency basis risk is managed within the Bank's economic capital framework, and reflected in the capital requirement for market risk, to ensure that the capital requirement for cross-currency basis risk is aligned with the established risk appetite. Counterparty credit risk inherent in the swaps is mitigated by collateral agreements (CSAs) with the swap counterparties.

3.3.4.3 Interest rate risk

The Bank manages interest rate risk by using derivatives to convert fixed rate funding into floating rate liabilities. Fixed rate lending that is not match-funded, is converted to floating rate receivables. This portfolio hedging approach ensures that interest rate risk between lending and funding in each currency remains low. The majority of the Bank's interest rate risk stems from the portfolio of liquid assets. The Bank does not hedge its future net interest margin against movements in interest rates.

The Bank measures and manages interest rate risk by estimating the sensitivity of the economic value of its balance sheet to an interest rate shock. The sensitivity is measured by means of basis point value (BPV) quantifying the impact of a one basis point parallel increase in interest rates on the present value of interest-bearing assets and liabilities.

The Bank measures its structural net interest income risk by estimating the sensitivity of the accumulated net interest income during the next twelve months to changes in the level of interest rates.

Maximum limit has been set for the acceptable exposure to interest rate risk at an aggregate balance sheet level. Individual BPV limits have been defined for EUR, USD and for the Nordic currencies, whereas a combined limit applies for all other currencies. Please see the Limits for Interest Rate Risk, Appendix 7.

The trading portfolio is subject to a low Value-at-Risk limit and a stop-loss limit, please see the Trading portfolio Limits, Appendix 8a. If the cumulative loss of the portfolio reaches the stop-loss limit, all open positions must be closed and trading is suspended for the rest of the calendar year. All positions in the trading portfolio are included in and monitored under the Bank's market risk limits.

3.3.4.4 Credit spread risk

The Bank manages its exposure to credit spread risk by calculating the sensitivity of its marketable securities to credit spread movements. The sensitivity is measured by means of Credit Spread Basis Point Value (Spread BPV) quantifying the impact of one basis point increase in credit spreads on the present value of the assets.

Limits have been defined to restrict the decrease in asset value to acceptable levels in accordance with the Bank's risk appetite for its portfolio of marketable securities. The Bank has set an overall limit for credit spread risk with specific sub-limits defined for various asset classes and portfolios. Please see the Limits for Credit Spread Basis Point Value, Appendix 8

To ensure that the liquidity portfolio maintains its market value and liquidity even under severe market conditions, the Bank has set limits to control the asset quality of the portfolio i.a. by defining minimum requirements for counterparty ratings. Please see the Limits for the Liquidity Buffer, Appendix 9.

3.4 Liquidity risk

3.4.1 Definition

The Bank defines liquidity risk as the risk of incurring losses due to an inability to meet payment obligations in a timely manner when they become due. The Bank categorises liquidity risk into *funding liquidity risk*, which occurs when payment obligations cannot be fulfilled because of an inability to obtain new funding, and *market liquidity risk*, which occurs when the Bank is unable to sell or transform assets in the liquidity buffer into cash without significant losses.

3.4.2 Appetite for liquidity risk

The Bank's business model is to obtain cost-efficient funding from the international capital markets (liabilities) and to use these funds to provide long-term lending to its customers and to maintain a liquidity portfolio (assets). Mismatches in the Bank's assets and liabilities in terms of currency composition, maturity profile and interest rate characteristics gives rise to liquidity risk.

The Bank accepts funding liquidity risk deriving from maturity mismatches between funding and lending. Liquidity risk is mitigated by maintaining a robust liquidity portfolio where a large majority of the assets are of high quality to support the Bank's operations. Having a strong liquidity position enables the Bank to carry out its core activities even under severely stressed market conditions without access to new funding.

The Bank strives to diversify its borrowing in terms of currencies, maturities, instruments and investor types in order to avoid excessive reliance on individual markets and funding sources. Market liquidity risk tolerance is low and the risk is mitigated by maintaining a high quality and sufficiently short-term liquidity buffer.

3.4.3 Key responsibilities

The Board of Directors approves the [Liquidity Policy](#), which outlines the key principles for the Bank's liquidity management. The Board of Directors receives regular reports on the liquidity position and the performance against approved limits and targets.

The President is responsible for ensuring that the Liquidity Policy is effectively implemented and for establishing prudent liquidity risk management and control procedures. The President also approves the methodology for liquidity stress testing. Furthermore, it is the President's responsibility to inform the Board of Directors in case the liquidity contingency plan is activated.

The liquidity position and adherence to exposure limits is managed by the Treasury function and monitored by the Risk Management functions on a daily basis.

The Treasury Committee and the ALCO oversee the development of the Bank's funding and liquidity position and decide on liquidity risk related matters in accordance with their respective mandates.

3.4.4 Liquidity risk management

Key objectives for the Bank's liquidity risk management are to ensure that the liquidity position is strong enough to (1) enable the Bank to carry out its core activities for a defined period of time under stressed market conditions without access to new funding; (2) secure the highest possible credit rating by international rating agencies; (3) fulfil the liquidity coverage ratio (LCR) and net stable funding ratio (NSFR) requirements as specified in the Capital Requirements Regulation of the European Union.

Measuring the liquidity requirement

The liquidity requirement for various time horizons is determined based on analysis and stress testing of future contractual cash flows. A key metric applied is the survival horizon, which measures how long the Bank is able to fulfil its payment obligations in a severe stress scenario. The target survival horizon is twelve months, which means that the Bank is able to meet its payment obligations and continue its business operations without disruption for the coming twelve months under stressed conditions. The minimum requirement is that the survival horizon must at all times exceed nine months. The stress scenario includes, among others, the assumption of payment disruptions in the loan portfolio, no access to market funding, early termination of all callable funding transactions and severe decline of asset value in the liquidity buffer as laid out in the Framework for Liquidity Stress Testing.

Liquidity buffer

To ensure sufficient liquidity in stressed financial conditions, the Bank holds a liquidity buffer. The buffer comprises unencumbered cash, deposits and securities mainly denominated in EUR, USD and the Nordic currencies. In order to ensure that the market value and liquidity of the buffer is preserved during adverse market conditions, the Bank has set strict rules for the composition of the buffer. As such, the buffer must include a minimum level of High Quality Liquid Assets as defined in the EU capital requirement regulation and a minimum level of assets in the internal rating categories corresponding to at least AA- by S&P and Aa3 by Moody's, please see the Limits for the Liquidity Buffer, Appendix 9. Furthermore, the buffer must comprise a certain level of assets eligible as repo collateral in central banks. The Bank does not have direct access to central bank repo facilities.

The maturity profile of the liquidity buffer is structured to fulfil the Bank's requirement that the expected net cash outflow during the next three months must be covered by maturing investments in the liquidity buffer.

Funding strategy

Diversification is a key objective of the Bank's funding and liquidity management. The Bank strives to diversify its borrowing in terms of currencies, maturities, instruments and investor types in order to avoid excessive reliance on individual markets and funding sources. Through regular benchmark issues, the Bank aims to secure broad market access. The annual funding plan is based on the projected twelve-month liquidity requirement and the projected size of the liquidity buffer. The funding plan is regularly adjusted to reflect changes in the liquidity requirement.

Contingency plan

The Bank has a contingency plan in place which defines the actions to be taken should the Bank encounter a liquidity shortfall in an emergency situation. The President decides on the activation of the contingency plan and subsequently informs the Board of Directors.

3.5 Operational risk

3.5.1 Definition

The Bank defines operational risk as the risk of direct or indirect losses or damaged reputation due to risk events attributable to technology, people, processes, procedures or physical arrangements and or external events.

3.5.2 Appetite for operational risk

The Bank is exposed to operational risk in all its activities. This includes day-to-day activities of the business functions (Lending and Treasury) as well as activities of the supporting functions (e.g. IT, HR and other support functions). Operational risk is also inherently attached to the Bank's products, services and systems.

As such, the Bank has no appetite for operational risk but recognises that all activities of the Bank expose it to potential operational risk events. The Bank manages operational risk by promoting a culture of integrity and high ethical standards and by maintaining strong risk awareness. Operational risk is further mitigated by implementing a proper risk identification process and set of internal control activities.

3.5.3 Key responsibilities

The Board of Directors approves the [Operational Risk Policy](#), which sets out the key principles of the Bank's operational risk management and control. Based on regular reporting, the Board of Directors oversees the Bank's operational risks.

The President has the ultimate responsibility for ensuring that appropriate operational risk management practices are in place and operating effectively in accordance with the Operational Risk Policy and the standards set out in the Operational Risk Guideline.

In the day-to-day operations the three-lines-of-defence model ensures accountability and defines the roles and responsibilities for operational risk management. The first line of defence are the respective Bank functions, who own the risks in their operations. It is the responsibility of line managers to ensure that operational risks are identified, communicated and understood, that appropriate actions are taken to mitigate losses and that incidents are reported. The second line of defence is the Risk & Compliance department, which is responsible for bank-wide monitoring and reporting on events and actual losses to the ALCO and the Board of Directors. The third line of defence is Internal Audit, which provides an independent evaluation of the controls, risk management and governance processes.

3.5.4 Operational risk management

The Bank's operational risk management focuses on proactive measures in order to ensure business continuity, the accuracy of information used internally and reported externally, a competent and well-informed staff and its adherence to established rules and procedures as well as on security arrangements to protect the physical and IT infrastructure of the Bank.

- For the purpose of managing operational risk, the Bank's activities have been divided into a set of core business processes and sub-processes with designated **process owners**. The process owners are responsible for identifying, reporting and responding to risks inherent in the processes.
- Data on **events** is collected in order to gain information on the type, cause, frequency and interdependence of various risk events. Events reported are reviewed and categorised in accordance with a risk taxonomy by Operational Risk & Security Control unit.
- Regular **risk and control self-assessment** is conducted for each core process. The process owners and key personnel involved in the process, under the stewardship of Risk Management,

seek to detect potential risk exposures or threats to the efficient functioning of the process and assess the adequacy of risk mitigation techniques used. Potential risks are assessed according to the likelihood of occurrence and impact.

- **New products** and business initiatives as well as major changes to existing products are processed carefully. Prior to launching a new product, all relevant risks are analysed and processes and controls established to manage the risks involved. The Rules for New Products and Process Approval shall be followed.
- **Outsourcing** requires thorough documentation of the activity to be outsourced and an analysis of risks involved. The Bank seeks to maintain the operational risks related to outsourced activities at the same level as if the activities were performed in-house.
- The Bank's **legal risks** relate to inadequate or inefficient documentation, issues of legal capacity, enforceability and the applicability of national laws and dispute resolution mechanisms in the jurisdictions under which it operates. These risks are mitigated by Legal through e.g. established procedures and legal advice, key clauses and the legal review of all contractual documents and other binding documents of the Bank, irrespective of whether they relate to the operational or the administrative activities of the Bank.

In its documentation of lending operations as well as in procurement contracts for the Bank's own purchases, the Bank uses key clauses developed over the years. For the documentation of treasury transactions, the Bank relies on standardised documentation commonly accepted in the market. Concerning borrowing, the Bank uses its own standard documentation developed based upon the Bank's Statutes and practise that has evolved over time.

- The Bank considers **Information and Communication Technology (ICT)** as one of its key focus areas in order to achieve operational excellence, reduce operational risk and reach a high level of cost efficiency aligned with the Bank's business strategy. The Bank aims at a high-quality ICT architecture that ensures performance stability and flexibility and which is adapted to the transaction volumes of the Bank. The Business and Technology Committee is responsible for aligning the Bank's enterprise architecture with strategic goals by prioritizing, directing, monitoring and governing the technology development.

As the Bank's operations are largely based on information processing, much emphasis is put on **information technology and cyber security**. The overall purpose of the Bank's Information Security Policy is to ensure an uninterrupted, secure and undisturbed use of information and communication systems. ICT security covers all parts of the ICT environment, including hardware, software, networks, databases and ICT services as well as ICT administration, ICT management, ICT operations and other ICT-related work processes.

- The Bank's continuity planning focuses on taking preventive measures to minimise the consequences of a serious disruption of business operations. The principles for business continuity management are laid out in the Business Continuity Policy, Security Policy and the Disaster Recovery Plan maintained by the Operational Risk and Security Control unit. The Bank's business continuity management requires that all business units develop business continuity capabilities for their respective functions with the aim to minimise the impact of unavailability of key resources such as staff, information, IT systems, networks and workspace.

3.6 Compliance risk

3.6.1 Definition

Compliance risk is composed of integrity risk and operational compliance risk. These are defined as

- Integrity risk - the risk of legal or regulatory sanctions, material financial loss, or loss to reputation that an entity may suffer as a result of its failure to comply with integrity related laws, rules and standards;
- Operational compliance risk - the risk of legal or regulatory sanctions, material financial loss, or loss to reputation that an entity may suffer as a result of a failure to comply with its internal policies and controls.

3.6.2 Appetite for compliance risk

The Bank faces compliance risk in all its activities.

The Bank has no appetite for compliance risk. NIB is committed to follow best practices and market standards in the areas of accountability, transparency and business ethics. The Bank has zero tolerance for misconduct and corruption. This principle is also reflected in the Bank's Risk Appetite Statement, which promotes a culture of integrity and high ethical standards and requires all individuals to comply with internal policies, regulations and procedures, and respect their spirit.

3.6.3 Key responsibilities

The Board of Directors is responsible for overseeing the compliance risk management in the Bank based on regular reporting. The Board of Directors approves the [Integrity and Compliance Policy](#), the overarching framework on compliance risk.

The President is responsible for communicating and implementing the Compliance and Integrity Policy and for ensuring that it is observed.

Members of senior management are responsible for the day-to-day management of compliance risk and for ensuring that procedures and guidelines regarding the Bank's integrity and ethical standards are adhered to within their area of responsibility.

The Integrity and Compliance Office ("ICO") oversees and coordinates matters relating to compliance and integrity risks, including reputational risks and provides independent expert advice to the Bank's management and Board of Directors in compliance and integrity matters.

Allegations of prohibited practices, misconduct and complaints in relation to NIB financed projects or counterparties and other activities of the Bank are investigated by ICO. The ICO reports its findings of investigations of external parties to an independent Sanctions Panel for decisions on sanctions (incl. debarments).

The Bank has Codes of Conduct for the Board of Directors and the President, the members of the Control Committee and for the staff. The codes of conduct articulate the values, duties and obligations as well as ethical standards that the Bank expects of its members of the governing bodies and staff. The codes of conduct and the [Policy on handling Inside Information and prevention of Market Abuse](#) are intended to prevent conflicts of interest, to prohibit the use of insider information, and to provide guidance for the handling of confidential information, and disclosure of financial and business interests.

3.6.4 Compliance risk management

In the day-to-day operations the three lines of defence model defines the roles and responsibilities for compliance and integrity risk in the Bank. The first line of defence lies with the respective Bank departments and units, which are responsible for ensuring that compliance risks are identified, understood and reported to the decision making bodies of the Bank and to ICO. The second line of

defence lies with ICO, which assesses and monitors the compliance and integrity risks and coordinates its control activities with the Risk Management functions, as necessary. Internal Audit is the third line of defence.

In managing compliance and integrity risks, the Bank places particular emphasis on preventing fraud and corruption, money laundering and the financing of international terrorism as well as tax fraud and tax evasion.

The principles related to managing integrity and reputational risks in connection with the Bank's operations are set out in the [Integrity Due Diligence Policy](#). Comprehensive internal screening procedures have been established to identify integrity and reputational risks relating to new customers and counterparties. In respect of existing customers this is carried out in the annual follow-up and more frequently when required.

Investigations of alleged prohibited practices, misconduct and complaints relating to non-compliance with the Bank's policies, and consequent actions, are undertaken in accordance with the [Investigations and Enforcement Policy](#). The [Speaking-up and Whistleblowing Policy](#) encourages staff to report prohibited practices, including fraud and corruption, and any other form of wrongdoing, and provides whistle blowers with protection against retaliation. The Bank's procedures are aligned with the [International Financial Institutions \(IFI\) Uniform Framework for Preventing and Combating Fraud and Corruption](#), which the Bank has endorsed.